

Alan Toothman
Construction, Inc.

540-459-4099
alantoothman.com

Relax...

...into a **low-maintenance** quality of life
...in a **friendly**, welcoming community
...among **quality finishes** and single-level living
...in the strength of our **reputation**
...in the proven, **enduring values** of our homes
...in **Strasburg's most convenient** community



Call to schedule a showing of our move-in ready homes or learn about custom building options. We offer a variety of floorplans, lots, and thoughtful details in our low-maintenance, luxurious, single-level homes.

Stony Pointe

Lot#44 & #45 – Now Under Construction Available for 2018 Delivery





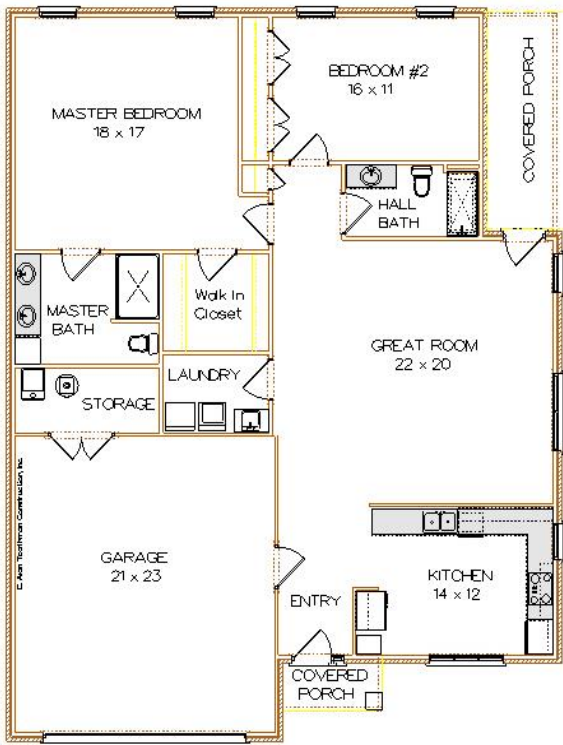
AVAILABLE FOR DELIVERY IN 2018

Lot #44 – 125 Anna Mae Ct

Regency Floor Plan 1,650 sqft

\$315,000

**2 Bedrooms, 2 Full Baths, Open Kitchen Design,
2 Car Garage with abundant Storage Room.**



Homes beautifully appointed with Red Oak Hardwood flooring, Andersen Windows, Granite Counters & Vanities, Merillat Cabinetry, 3' Interior Doorways, Crown Moulding, Walk-In Showers, Open Kitchen Designs, Laundry with Utility Sink, Spacious Rooms with abundant natural light. Brick and Hardiplank Exteriors with inviting Covered Porches.

Homes feature universal design features for convenient living with distinctive quality materials.

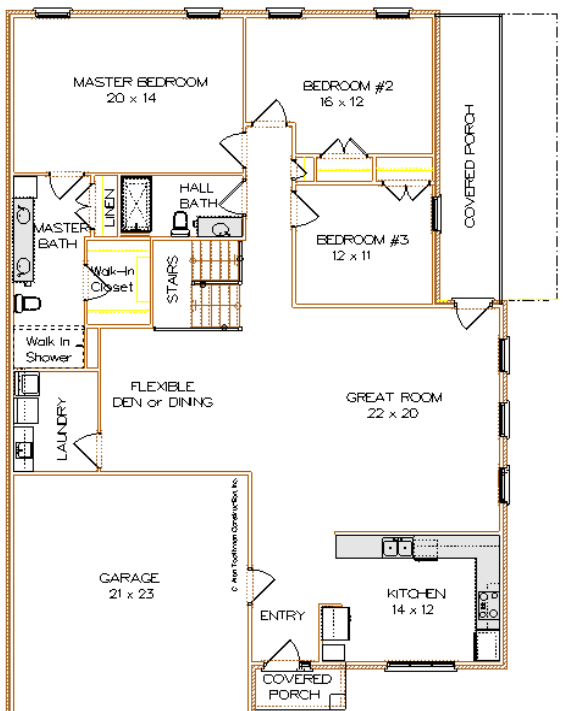
Make your plans now to personalize your new home in Strasburg's finest community, you will be ready to start enjoying the friendly Stony Pointe neighborhood in 2018!

Lot #45 – 121 Anna Mae Ct

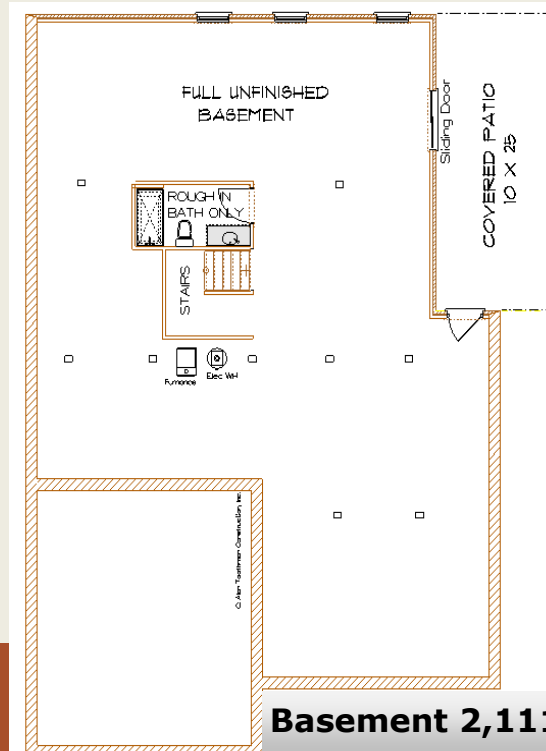
Gateway Floor Plan 2,111 sqft

\$370,000

**3 Bedrooms, Flex Den/Dining Room, 2 Full Baths,
Spacious Open Kitchen Design, 2 Car Garage,
Full Walk Out Basement, Covered Porches**



Main Floor 2,111 sqft



Basement 2,111 sqft

540.459.4099

alantoothman.com