

Alan Toothman
Construction, Inc.

540-459-4099
alantoothman.com

Relax...

...into a **low-maintenance** quality of life
...in a **friendly**, welcoming community
...among **quality finishes** and single-level living
...in the strength of our **reputation**
...in the proven, **enduring values** of our homes
...in Woodstock's **most convenient** community



HP
HISEY
PARK

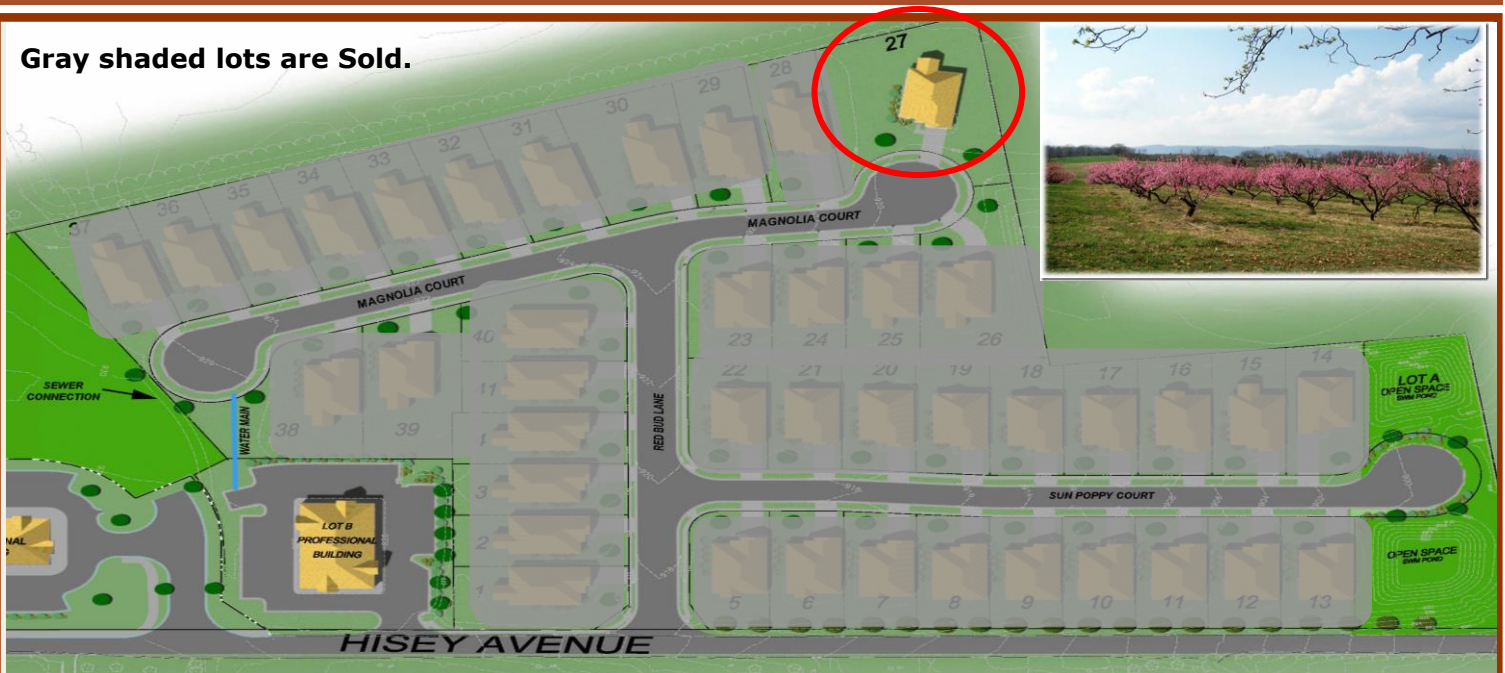


**AVAILABLE FOR
2018 DELIVERY**

Lot #27

**Start selecting your
interior features
today to personalize
your new home
just right for you!**

Gray shaded lots are Sold.



**Contact us today to learn more about our
convenient single-level living homes.**

540.459.4099

info@alantoothman.com



Alan Toothman
Construction, Inc.

540.459.4099
alantoothman.com

FINAL LOT AVAILABLE in HISEY PARK

Lot #27 – 1038 Magnolia Court Woodstock

\$435,000

Spacious Half Acre Cul-De-Sac Lot with space available for a separate Garage or Recreational/Hobby Area.

**Legacy Floor Plan – 2,344 sqft
3 Bedrooms, 2 Full Baths, Great Room,
Den/Dining Room, Spacious Open Kitchen Design,
2 Car Garage, Abundance of Closet Space,
relaxing Screen Porch and Rear Patio.**

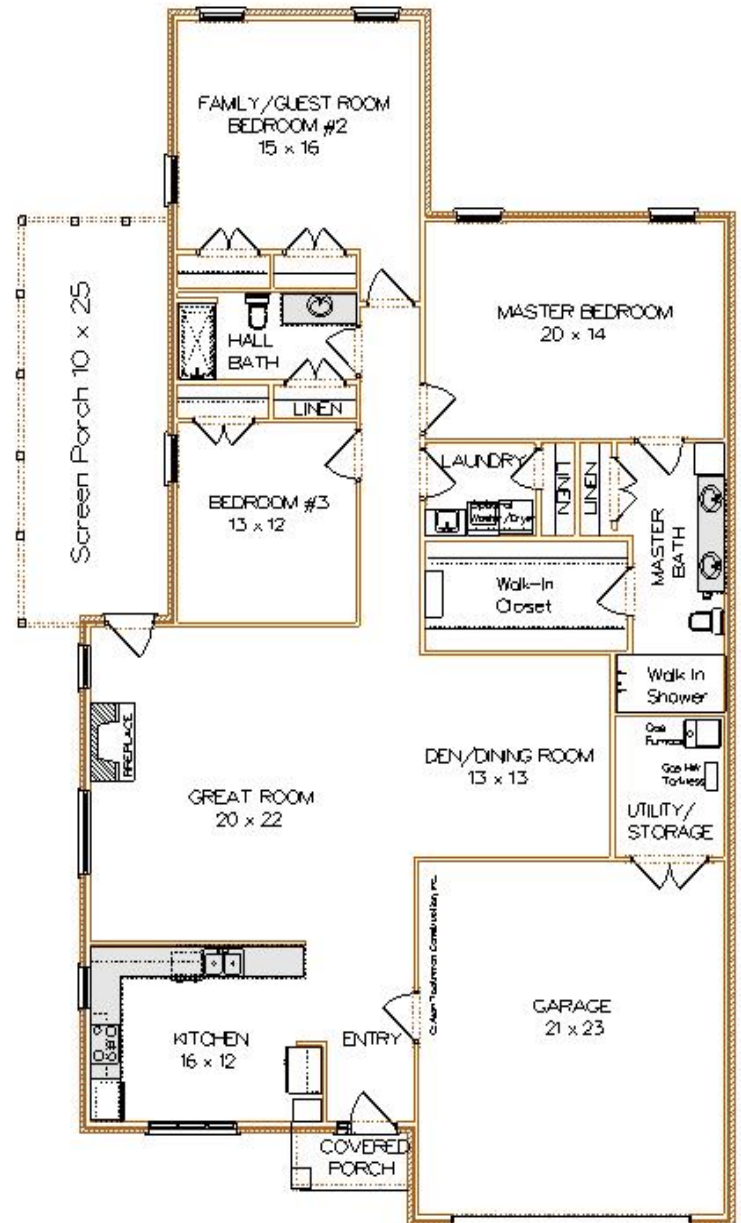


Home beautifully appointed with Red Oak Hardwood and Tile flooring, 9' Ceilings, Andersen Windows & Door, Granite Counters & Vanities, Merillat Cabinetry, 3' Interior Doorways, Crown Moldings, Tile Walk-In Shower in Masterbath, Open Kitchen Design with Gas Cooktop and Separate Wall Oven, Laundry Room with Utility Sink. Spacious Rooms with Abundant Closet Space and Natural Lighting. Natural Gas HVAC & Tankless Water Heater. Exteriors of Brick and Hardiplank with inviting Screen Porches.

Homes feature universal design features for convenient living with distinctive quality materials.

Make plans now to personalize your new home in Woodstock's finest community.

Start enjoying the friendly Hisey Park neighborhood in 2018!



Model Home not available at this location, Contact us for details.