

Alan Toothman Construction, Inc.



25 YEARS

Building convenient, planned communities in Virginia's beautiful Shenandoah Valley with the retiree in mind.

Founding Visions

1987

- Alan Toothman Construction, Inc. (ATC) was established in 1987 by D. Alan Toothman in Warren County, VA to build custom, single-family homes.

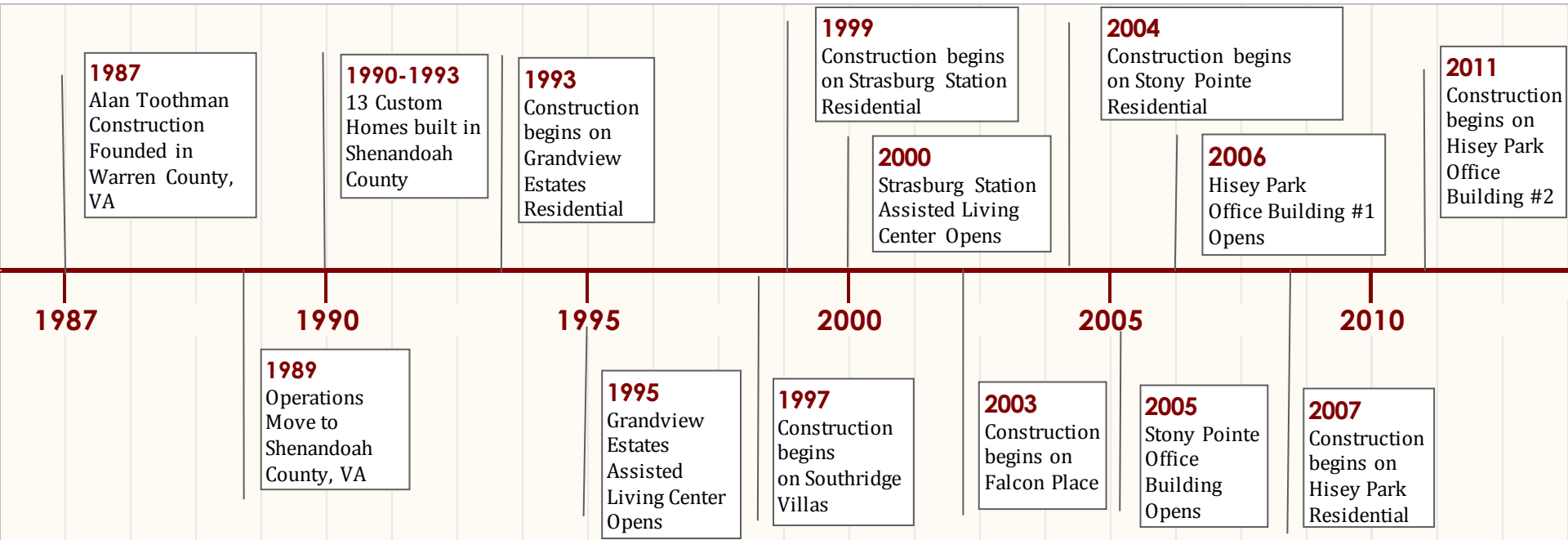
1989

- In 1989, ATC expanded to Shenandoah County, VA, where all operations moved to within three years. Here, ATC answered the region's demand for quality and convenience for retirees with six highly regarded communities.

The company has also been busy building relationships. From local subcontractors, town and county officials, and community leaders to (most importantly) our valued customers, we understand these positive relationships contribute to the quality we consistently offer.



Timeline



By the Numbers

Since 1987....

- **315** Lots developed within the Towns of Woodstock & Strasburg solely for ATC.
- **300** Homes built to date in Shenandoah County including:
 - **62** at Grandview Estates
 - **32** at Southridge Villas
 - **64** at Strasburg Station
 - **20** at Falcon Place
 - **88** at Stony Pointe
 - **10** at Hisey Park
 - **24** Custom built homes outside of ATC communities
- **3** Commercial Buildings constructed for Toothman Investments, LLC.
- **2** Assisted Living Facilities constructed in partnership with Mayfair Management, LLC.



Key Employees

- **D. Alan Toothman**

Owner — Director of Construction Operations (25 years)

- **Linda Grabill Toothman**

Director Sales & Marketing, Customer Relations, Responsible Land Disturber (17 Years)

- **Doug Price**

Lead Trim Carpenter (11 years)

- **Donna Smedley**

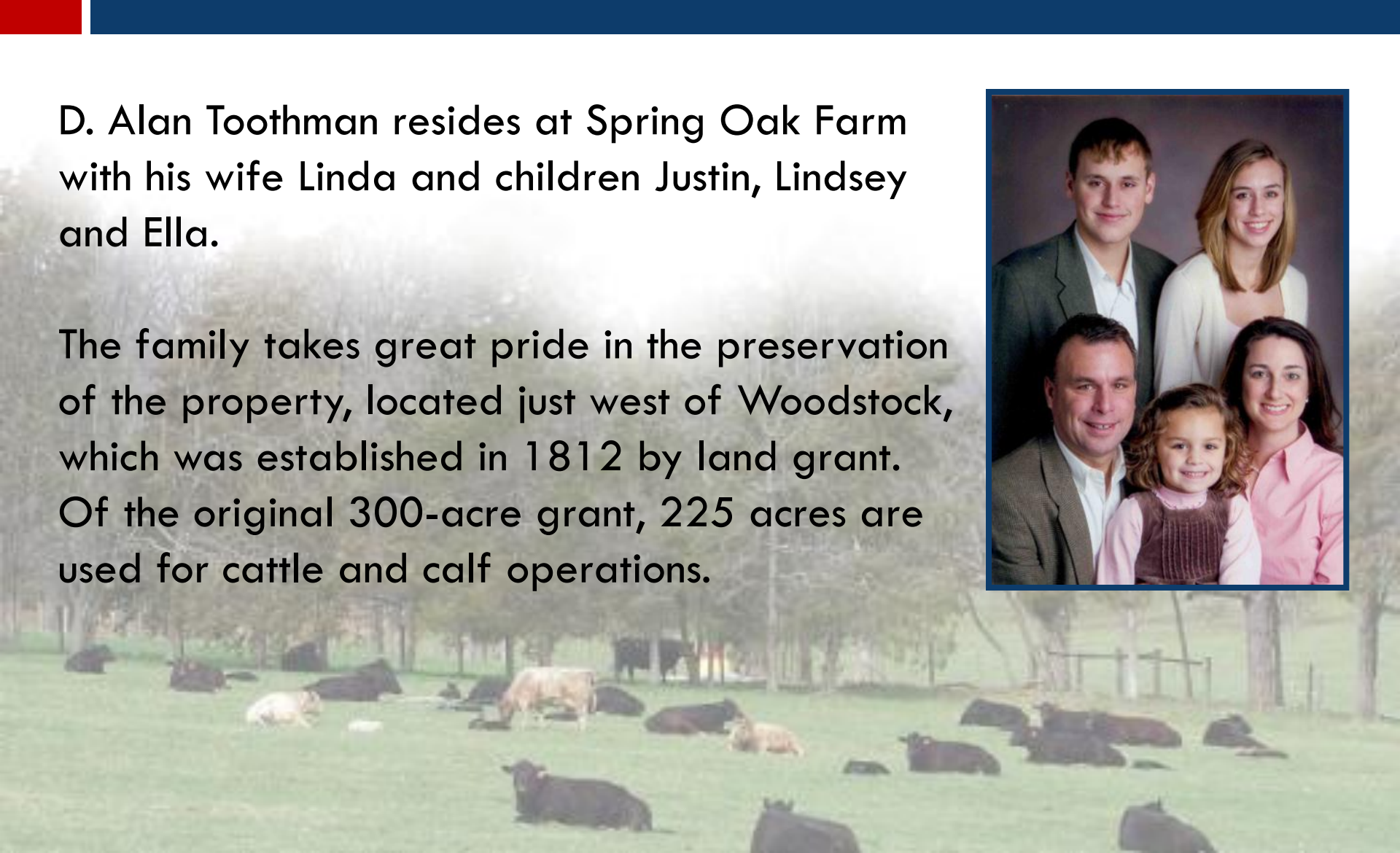
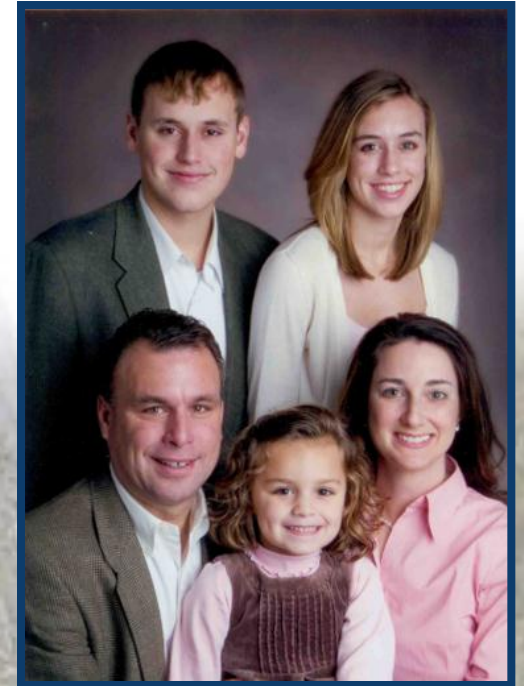
Accountant



A Family Preserving Valley Heritage

D. Alan Toothman resides at Spring Oak Farm with his wife Linda and children Justin, Lindsey and Ella.

The family takes great pride in the preservation of the property, located just west of Woodstock, which was established in 1812 by land grant. Of the original 300-acre grant, 225 acres are used for cattle and calf operations.



Alan Toothman Construction Main Office, Sales & Design Center

1066 Hisey Avenue, Suite #102 Woodstock, VA



Residential & Commercial Developments





Residential Development

- Located off Fairground Road in Woodstock, VA
- Opened in 1993
- 62 Duplex Style Homes



For Directions to the Community- Click on the Map Below





Commercial Development

Greenfield Senior Living of Woodstock (formerly Mayfair Woodstock)

- Located at 935 Ox Road Woodstock, VA
- Built in 1995
- 18,000 sq. ft.
- Assisted Living & Memory Care Facility



- Located on Southridge Court in Woodstock, VA
- Opened in 1997
- 32 Villa Style Homes

For Directions to the Community- Click on the Map Below





Residential Development

- Located on Maynard Lane in Strasburg, VA
- Opened in 1999
- 64 Duplex style Homes

For Directions to the Community- Click on the Map Below





Commercial Development

Greenfield Senior Living of Strasburg (formerly Mayfair Strasburg, LLC.)

- Located at 14 Maynard Ln. Strasburg, VA
- Built in 2000
- 20,000 sq. ft.
- Assisted Living & Independent Living Center





Residential Development

- Located on Kestrel Court in Woodstock, VA
- Opened in 2003
- 20 Duplex Homes

For Directions to the Community- Click on the Map Below





Residential Development

- Located off VA Route 55 in Strasburg, VA
- Opened in 2004
- 96 Duplex, Villa, & Patio Style Home Sites



For Directions to the Community- Click on the Map





Commercial Development

Stony Pointe Office Building

- Located at 105 Stony Pointe Way Strasburg, VA
- Built in 2005
- 28,800 sq. ft.
- 12 Office/ Medical/Service Sector Suites
- Owned and Managed by Toothman Investments, LLC.





Residential Development

- Located off Hisey Ave. in Woodstock, VA
- Opened in 2007
- 41 Zero Lot Line Patio Style Home Sites

For Directions to the Community- Click on the Map



Hissey Park Office Building #1

- Located at 1066 Hisey Avenue Woodstock, VA
- Built in 2006
- 6,000 sq. ft.
- 4 Office Suites
- Owned and Managed by Toothman Investments, LLC.



Hisey Park Office Building #2

- Located at 1080 Hisey Avenue Woodstock, VA
- Opened January 2012
- 6,000 sq. ft.
- Single Tenant - Child Care Learning Center
- Building Owned & Managed by Toothman Investments, LLC.

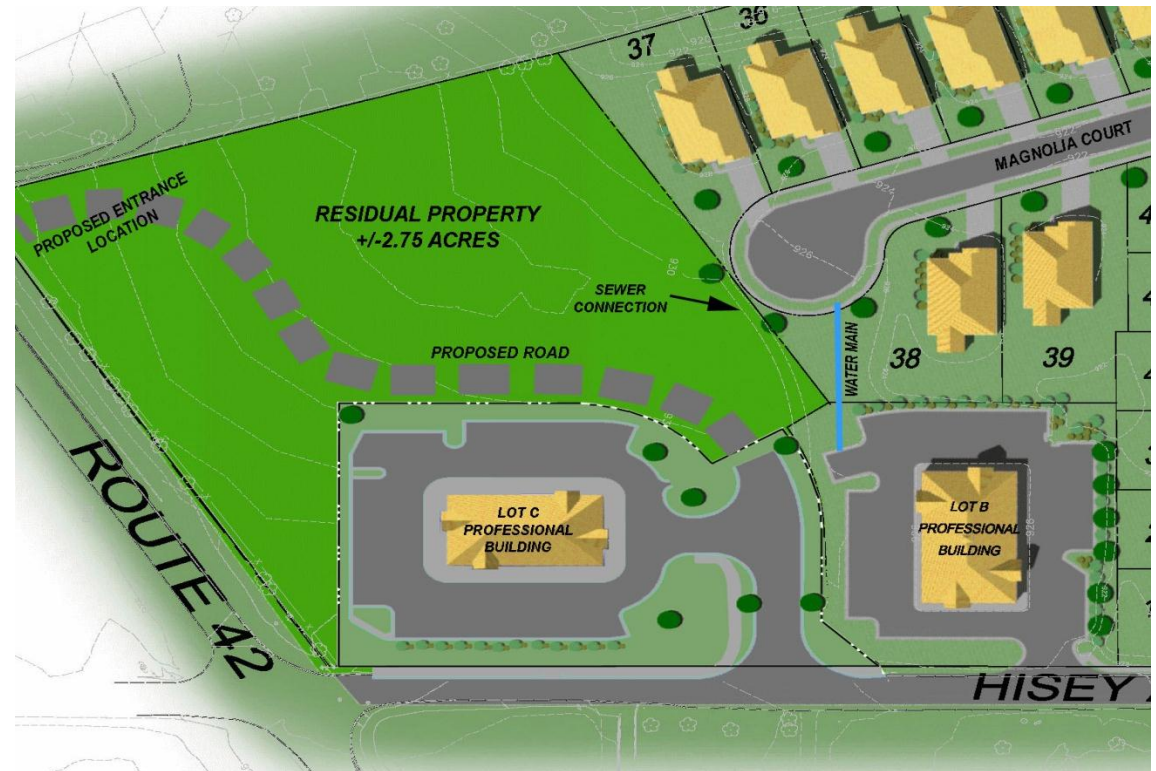
Pollywog Place
A REGULUS GROUP NURSERY AND PRESCHOOL



Hisey Park Commercial Pad Site

Hisey Avenue Woodstock, VA

- 2.755 Acres
- Zoned B-2
- On Site Improvements –
75% of stormwater management
completed off site.



Comments by Alan Toothman Construction Homeowners

“Having met many professionals in the community, I would like to add Toothman Construction has an excellent reputation within the community.”

—D.M., *Hisey Park Homeowner*

“[Having purchased two homes from Toothman Construction] Both of these homes have been of the highest quality with no existing problems. I hold them in high regard as to a truly well constructed home, and a reputable company to deal with.”

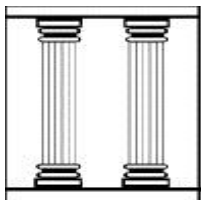
—J.C., *Strasburg Station & Stony Pointe Homeowner*

“Mr. Toothman is a hands-on executive who applies his knowledge and experience to keep his projects on schedule and on budget. He has a pleasant demeanor and demonstrates that he is fully committed to ensuring his clients are satisfied with their homes.”

—P.K., *Homeowner of 3 Stony Pointe Homes*

Building for the Community

Alan Toothman Construction does more than just build homes; we build communities and quality of life. Through our 25 years of construction experience, dedicated staff, ample resources, and long-term professional relationships, we ensure that the homes we build create lasting value to our clients and our wider community.



Alan Toothman Construction, Inc.
