

Alan Toothman  
Construction, Inc.

**SPECIAL  
INVENTORY  
PRICING**

Where quality, craftsmanship, superior home design, and dedicated service come together to build your new home. Specializing in planned developments in Virginia's beautiful Shenandoah Valley with the retiree in mind.

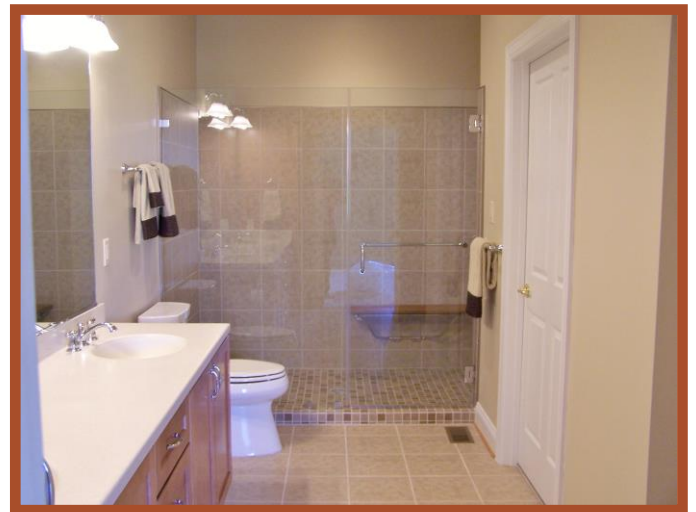


**1058 Sun Poppy Court, Woodstock, VA**

2,111 sq.ft. (The Gateway Floor Plan - Customized) Lot #22

**SALE \$289,000**

- 3 Bedrooms, Den, Laundry Room, 2 Baths & 2 Car Garage
- Covered Porch with Privacy Landscaping
- Oak & Tile Flooring, Solid Surface Counters, Maple Cabinets
- Universal Design Features throughout
- Large Master Suite with Abundance of Closet Space
- Large Walk-In Shower in Masterbath-Glass Enclosure & Seat
- Enhanced Landscaping



*R*  
**HISEY**  
P A R K



[www.alantoothman.com](http://www.alantoothman.com)

540.459.4099